

Snap Tap with Saddle

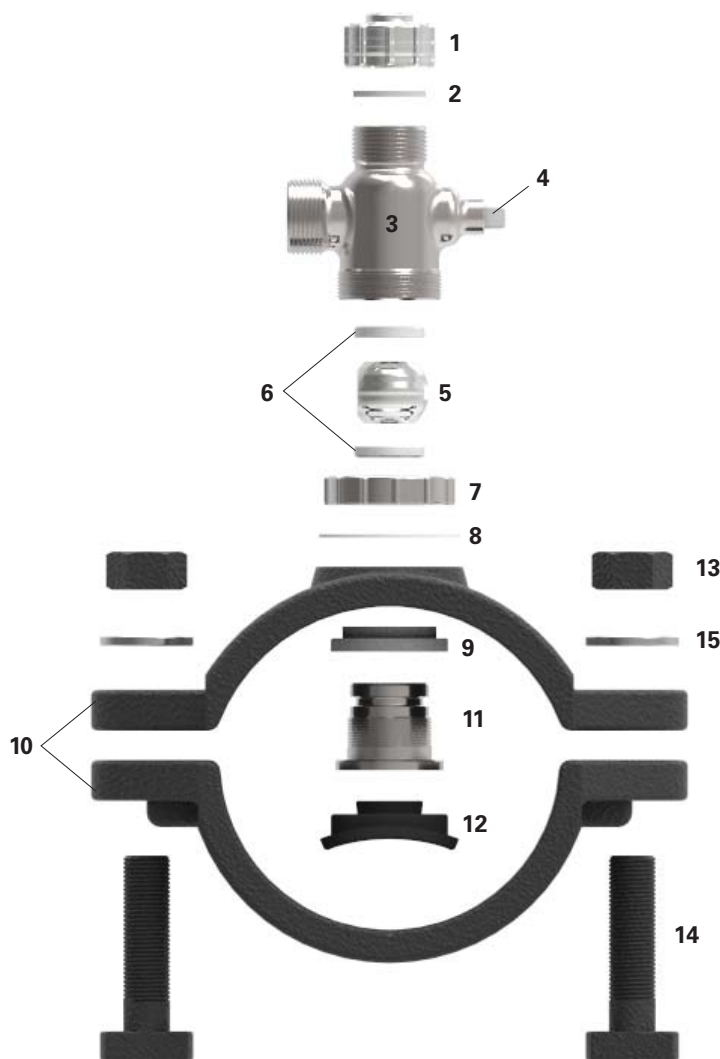


SNAPTAP WITH SADDLE

APPLICATION

- All types of main pipe for water supply
- Use for building branch pipes off from main pipeline without locking water supply
- Temperature Range : -20°C ~ 100°C
- Pressure Range: 10bar (Maximum operating pressure: 20bar)
- Custom made available (size, material, standard, industries and etc.)

COMPONENTS & MATERIALS



NO.	COMPONENT	MATERIAL
1	Cap	CF8 / CF8M
2	Cap Packing	EPDM
3	Body	CF8 / CF8M
4	Stem	SS304 / SS316
5	Ball	SS304 / SS316
6	Seat	PTFE
7	Lock Nut	CF8 / CF8M
8	Insulation Pad	PE
9	Insulation Guide	PE / EPDM
10	Saddle & Band	FCD450
11	Insert	CF8 / CF8M
12	Upper Packing	EPDM
13	Nut	FCD450
14	Bolt	FCD450
15	Washer	SS400 / SS316

PRODUCT TYPES & SIZES



Subdivision	Sizes
Saddle Band	DN40 DN50 DN75 DN100 DN150 DN200 DN250 DN300 DN350
Snap Tap	DN13 DN20 DN25 DN30 DN40 DN50

FEATURES

- Designed as 360° free swivel, maximize convenience to adapt at construction site.
- Double block packing design prevents leakage from the connection points between saddle and main pipe.
- Unique technology prevents a galvanic corrosion between ductile saddle and stainless steel valve
- Build up branch pipes from main pipeline without locking water supply due to control ball in the body.
- Solution heat treatment applied stainless steel valve.

INSTALLATION GUIDE



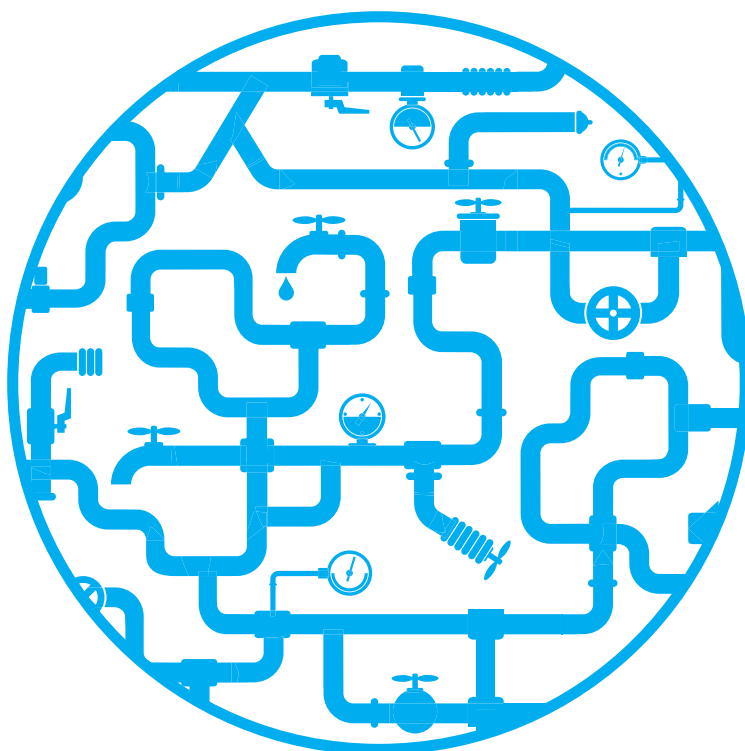
Install the Saddle on the main pipe



Drill a hole on the main pipe through the snap tap



Connect branch pipe from the snap tap



HI-STEN Co., Ltd

113-79, Seoburo 1499beon-gil,
Gimhae-si, Gyeongsangnam-do, Korea

Tel. +82-55-329-0837, +82-55-328-0840 **Fax.** +82-55-329-0841
E-mail. histen_id@histen.co.kr **Web.** www.histen.co.kr



CAUTION

- Descriptions, values or specifications in catalog do not mean to guarantee the quality of product itself.
- Characteristics of product can be changed regarding the aim of use with different condition.
- Technical information can be revised without any notification. Please check again before use.